



# Airtec® Quick Guide - HYDROJET™

Installation





# Arbeitsplatz-Sicherheits-Checkliste








# Wiederholungsfragen - Zusammenfassung



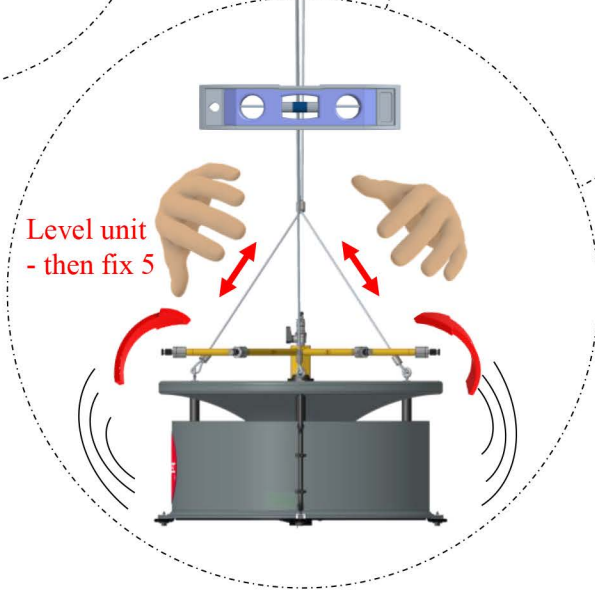
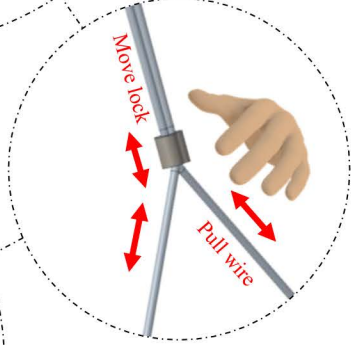
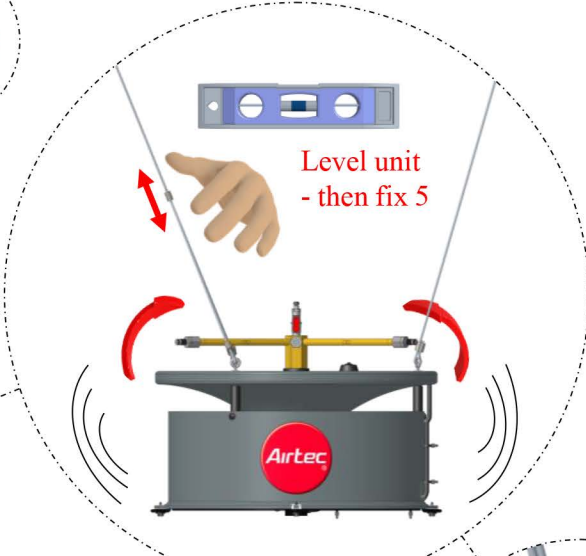
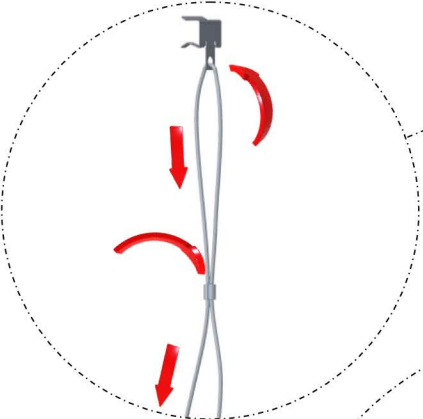
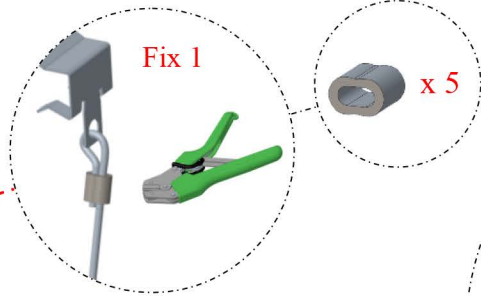
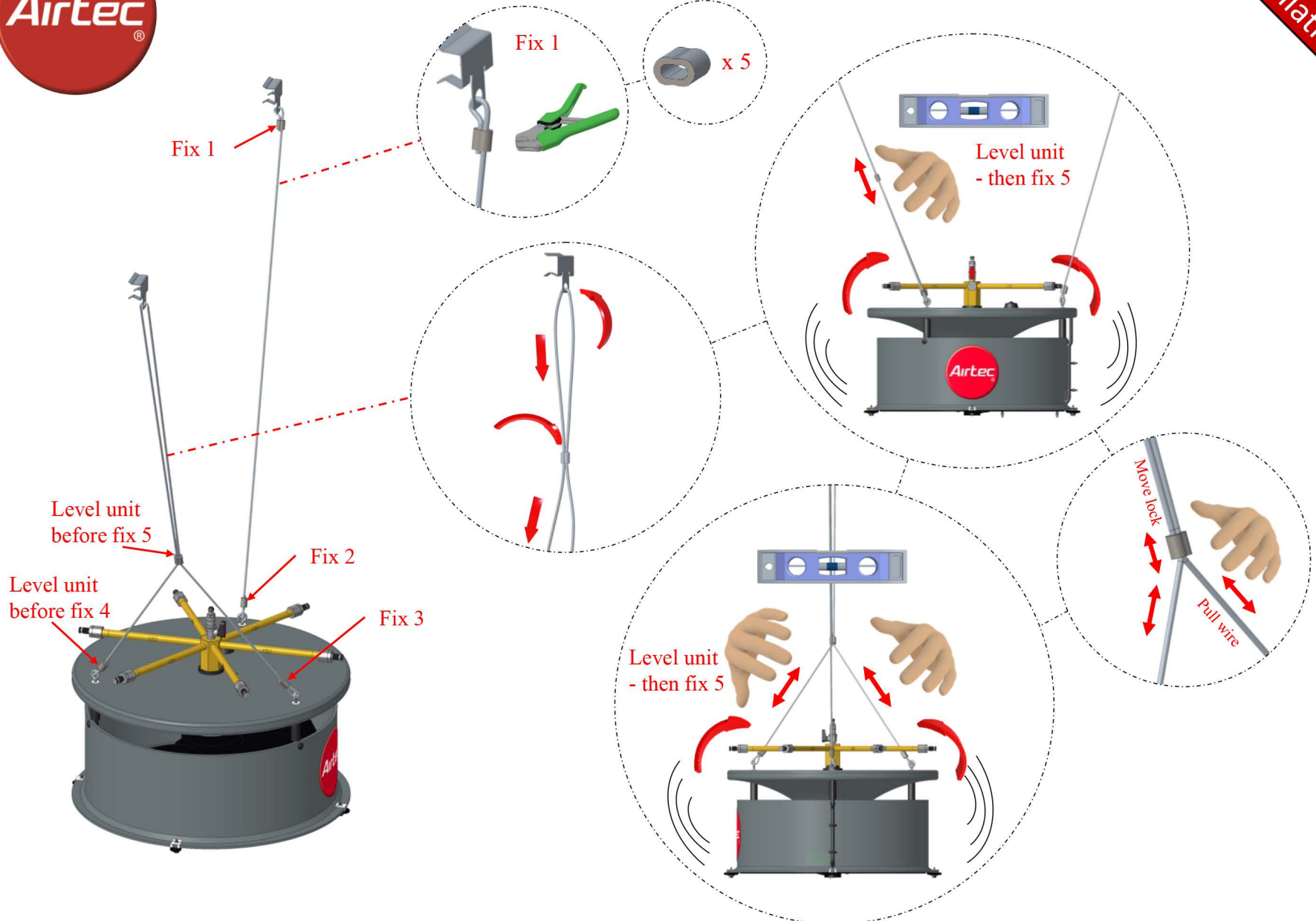
## Wiederholung

 $\frac{1}{2} \cdot \frac{1}{3}$	$\frac{1}{2} \cdot \frac{1}{3}$	$\frac{1}{2} \cdot \frac{1}{3}$
$\frac{1}{2} \cdot \frac{1}{3}$	$\frac{1}{2} \cdot \frac{1}{3}$	 $\frac{1}{2} \cdot \frac{1}{3}$
$\frac{1}{2} \cdot \frac{1}{3}$	 $\frac{1}{2} \cdot \frac{1}{3}$	$\frac{1}{2} \cdot \frac{1}{3}$



# Airtec® Quick Guide - HYDROJET™

Installation





# How to Use the Airlock



225 mm

225 mm



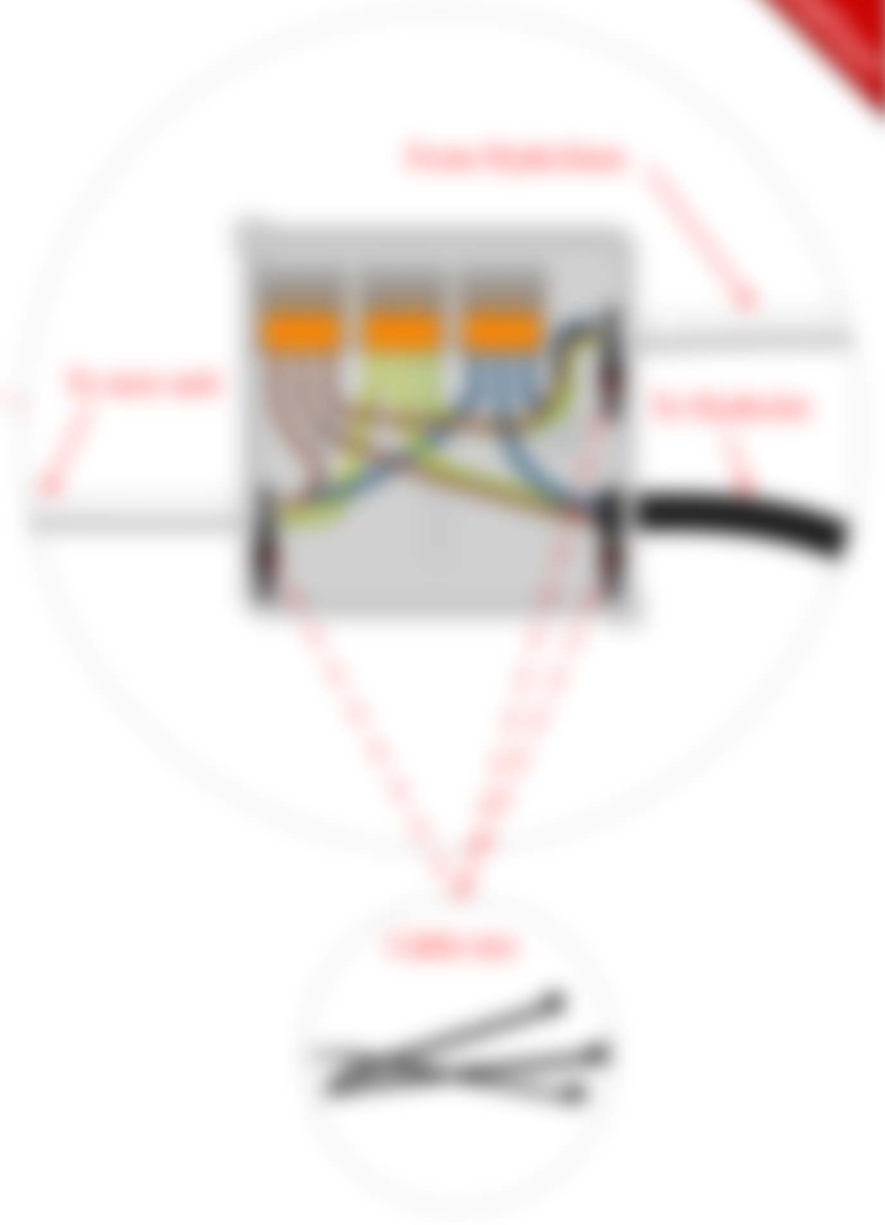


# Airbus® Quick Guide - installation





# Smart® Dual Switch - 20Amp/250V





# Arduino® Board Guide - Introduction

